

RURAL AND REMOTE COMMUNITIES

This chapter discusses how Canada's rural and remote communities are impacted by climate change, and how they are moving from adaptation planning to action.

Climate change is affecting rural and remote communities



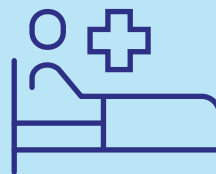
Climate change is challenging livelihoods and economies

Critical infrastructure and services are at risk

Local and Indigenous Knowledge are key to adaptation and understanding climate impacts



Individual and community health and well-being are being negatively affected



Climate change is resulting in intangible losses and damages

Local participation in adaptation decision-making improves outcomes



Explore the Rural and Remote Communities chapter, one of nine chapters from the *Canada in a Changing Climate: National Issues Report* of the national knowledge assessment on climate change impacts and adaptation, by visiting this link:

ChangingClimate.ca/National-Issues/chapter/3-0/

#ChangingClimate

